



E-NEWS

Your Town, Your Community, Your News

**December 2022
Issue 97**



E-NEWS

Your Town, Your Community, Your News

News from The Town Clerk - Page 3

Monthly Round-Up from The Mayor - Page 5

Lloyd Russell-Moyle MP's Morrisons Update - Page 6

Read about Warm Havens at Community House - Page 7

What's Going On? - Pages 8 - 11

Can You Help Find The Naughty Elves? - Page 12

**Hear About The Unstoppable Dawn's Everest Challenge
- Pages 13 and 14**

Get Your December Gardening Tips - Page 25

Plus lots more.....



From the Desk of The Town Clerk

The Armistice and Remembrance Services went off very well. The weather was very kind and both events were well attended.

Each generation is one step removed from these horrific events, so it is great to see children of all ages being involved, reading out poems and laying their wreaths.

'We will remember them'.

MAKE A CHANGE - BECOME A COUNCILLOR - TOWN ELECTIONS - MAY 2023

Are you passionate about your community?

Do you want to help make a long-lasting change?

Do you have innovative ideas for the Council?

Do you have concerns about specific issues and want to do something about it?

If this is you, then your Town needs you.

We need people from all backgrounds and experiences who reflect their community to put themselves forward for election.

Make a change, become a Councillor.

Town Councils and Councillors make a massive difference to local people's quality of life. They are passionate about their communities and seek to make a change to help improve their residents' lives.

Please contact me for further information. An Information Link will soon be put on the Council's website (www.peacehaventowncouncil.gov.uk).

Season's Greetings and all the very best for the New Year.

CALLING ALL COMMUNITY HEROES



Peacehaven Town Council

NEEDS YOU!

MAKE A CHANGE
BECOME A COUNCILLOR

TO FIND OUT MORE, CONTACT:

townclerk@peacehaventowncouncil.gov.uk



From The Mayor, Lucy-Jo Symonds

In November, I was honoured to be asked to open the new Peacehaven Community School Library. The fantastic new facility at the School is an amazing asset for the students to promote the importance of reading, not just for learning and information, but for pleasure and mental well-being as well.



We marked Armistice Day on 11th November with a short service at the Peacehaven & Telscombe War Memorial. A Maroon Launch by the Coastguard marked the two minutes silence, followed by some presentations and readings by local children from local nursery, primary and secondary schools, who all did absolutely fantastically.

Sunday 13th November was Remembrance Day with a parade and traditional service at the Memorial. The event was exceptionally well attended and it was great to see so many local organisations and groups laying wreaths for the occasion. My thanks go to everyone who was involved with the organisation and running of the day.



As we enter the festive period, there's a huge amount going on at Community House, including the Christmas Market, Children's Christmas Party, The Peacehaven Players' pantomime, Cinderella, as well as our Christmas Bingo - it would be great to see all of these well attended.

Finally, with the weather getting colder, I want to reassure Peacehaven residents that your Town Council and Councillors are doing everything we can to provide support over the winter - residents can contact The Information Office for advice and information on local support - and we will be hosting a Warm Havens at Community House. More information on this later in this issue of E-News.



FROM MP, LLOYD RUSSELL-MOYLE

Last week, I met with Morrisons and their developers about The Meridian Centre Redevelopment. I know there have been considerable concerns raised about the transitional arrangements during the construction period.

They have told me they are looking at putting on a bus to their Seaford store for those that need access to the ability to shop while the construction is taking place. Further, they have told me they are exploring options to ensure continued access to cash machines and the Post Office.

I also raised the issue of the existing businesses at the site and where they were meant to go. Morrisons said that because the Co-op had the lease with the businesses, there had been a delay in negotiating with them due to needing to get permission from the Co-op. This, I am assured, has been done and they are now trying to contact all the businesses to see what lease offers can be made to the businesses we already have there.

I pushed them to consider relocating the bus stop from the back of the store as I don't think it is a welcoming or easily accessible location for a bus stop, but I was told it was difficult to arrange.

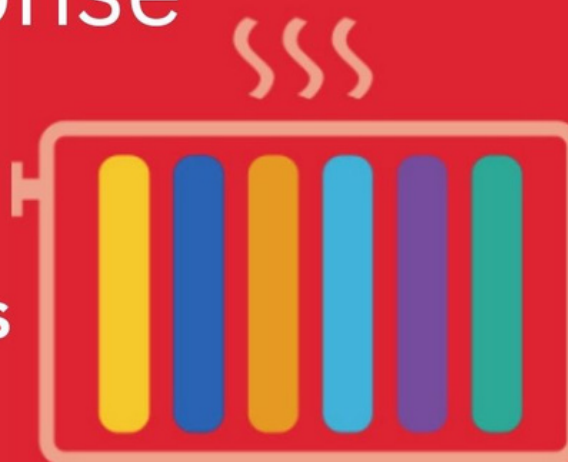
On the whole, I will wait to see what plans will be submitted to the Council before I pass final judgement, but I do think what is being proposed at the moment will mean a vastly improved Meridian Centre.



Cost of Living Crisis Response

**Need somewhere warm
to go?**

**We provide a Warm Havens
at Community House**



From 30th November 2022:

Monday - 09:00am - 12:30 p.m.

Wednesday - 09:00am - 12:30 p.m

(We will be closed from 26/12/22 - Warm Havens will reopen on Monday 09/01/23)

Given the increasing impact of the current cost of living crisis on our residents, there is a need to come together as a community and provide a warm and safe place to sit, study, work or be in the company of others.

PTC Warm Havens is a safe, non-judgemental warm space where all are welcome, for whatever reason you need.

- ***Hot Drink, Squash or Cup of Soup***
- ***Free Wi-Fi***
- ***Child Friendly***
- ***Disabled Access***
- ***Be with Company***
- ***Access to toilets***
- ***Sit and be warm***

**Peacehaven Town Council
Community House, Meridian Centre,
Meridian Way, Peacehaven**

BN10 8BB

Tel: 01273 585493

Email: Info@peacehaventowncouncil.gov.uk



“The Santa Bus Is Coming To Peacehaven”

Christmas Bus Fun, Music And
Christmas Magic For Children,
Parents, Grandparents,
Neighbours And Everyone.

December 2nd
From 5.30pm

My Route...

Santa Stop: Ashington Gardens Stores, 5.30 to 5.45pm

Then along Arundel Road

Santa Stop: Westview Close, 6pm to 6.15pm

Then along Arundel Road

Santa Stop: Gateway Cafe, The Big Park, 6.30 to 7pm

Then along Arundel Road

Santa Stop: Lake Drive, 7.15 to 7.30pm

Then up Hodden Avenue and along Firle Road

Santa Stop: Corner of Roderick Avenue, 7.40 to 7.50pm

Santa Stop: Skylark Avenue/Chalkers Rise, 8pm to 8.30pm

Looking forward to seeing you... Ho Ho Ho!

And thank You...Your donations help
to keep your community buses
operating for everyone



CTLA
TRANSPORT FOR YOUR COMMUNITY

People Bus Transport Services For
Towns And Villages Across East Sussex

www.ctla.org.uk

UK Licence No 202200746
UK Licence No 202200725

CTLA Registered Charity No 1110215
Company Registration No 0440957

Christmas 2022

Meridian Centre Peacehaven

Cinderella

By David Maun



Friday 2nd Dec 7pm

Saturday 3rd Dec 2:30pm & 7pm

Friday 9th 7pm & Saturday 10th 6pm

An amateur production by arrangement with Stagescripts Ltd

Tickets from

www.peacehavenplayers.co.uk

Peacehaven Information Office

Telscombe Civic Centre

Tel: 0333 666 3366

Booking fees apply



PEACEHAVEN PLAYERS

Peacehaven Town Council,
in aid of the Mayor's charities,
presents

B

I

N

G

O

Cash
Prizes

Snowball
& Flyer
Games

6

21

4

33

10

13



£4
8
Games

Wednesday 14th December 2022

2-4pm

Main Hall, Community House, Meridian
Centre, Peacehaven, BN10 8BB



**Peacehaven Town Council is putting a call out
for Volunteers to help out at its popular
monthly Bingo! sessions.**

**You'd be needed to spare a few hours every
third Wednesday of the month to come along
and assist with the event.**

**If you'd like to find out more about this fun
volunteering opportunity, please contact
George Dyson, The Council's Deputy Clerk and
Civic Officer on 01273 585493 or via email:
dcco@peacehaventowncouncil.gov.uk**



WANTED



**Please inform Peacehaven Town Council
if you see these two naughty elves!**

Email: projects@peacehaventowncouncil.gov.uk



UNSTOPPABLE DAWN CONQUERS MOUNT EVEREST FOR CHARITY

In October, Peacehaven Town Councillor, Dawn Paul, spent over 18 days in Nepal climbing Mount Everest to raise money for the NSPCC.

Dawn, who is also Chair of Brighton Area NSPCC Volunteers and Founder of the annual Angels Walk in Peacehaven, ascended 5,357 metres to the Mountain's Base Camp.

Dawn originally planned her Everest Challenge to celebrate her 60th birthday, but due to the global COVID Pandemic, she had to change her original plans. However, Dawn didn't relax, instead she walked a total distance of 50 km around Centenary Park.

Talking about her experience, Dawn said, "I wanted to do something different to celebrate my landmark 60th birthday, but as my special birthday took place during the Pandemic, I hiked around my local park. Not quite trekking to the Everest Base Camp, but a challenge none the less."

Not giving up on her dream, Dawn finally got her wish in October and successfully made it, not only to Nepal, but to the Everest Base Camp, along with one of her sons, Andrew, who accompanied his Mum on the trip.

Dawn continued, "Having Andrew with me having Andrew with me to guide me over all those horrendous bridges was a real plus.

"We were trekking 10 hours at a time, and two weeks at altitude, but it was so worth it. I may not have been to Everest for my 60th birthday, but I made it for my 62nd birthday."

Thanks to Dawn's amazing effort and achievement, all funds raised will go towards supporting Childline, one of the vital services provided by the NSPCC. The service is there to give young people a voice when no one is listening, which can only continue thanks to donations.

Before Dawn left to conquer Everest, she'd raised over £3,000 on her JustGiving page and is hoping to reach — and exceed - her target of £6,000.

If you'd like to donate, please to go to:
<https://www.justgiving.com/fundraising/theunstoppableDawn>



THE UNSTOPPABLE DAWN'S MOUNT EVEREST SCRAPBOOK



Photographs credited to Charity Challenge and @fraser_ross_morton

GRAB A BOOSTER!

NHS



**Walk in for
a Covid-19
booster
vaccine at
selected
sites**

Walk-In Covid Booster Clinic

No Appointment Necessary

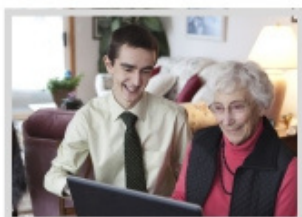
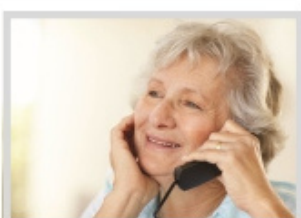
EVERY THURSDAY

11 a.m. to 3 p.m.

At Community House, Meridian Centre

If you have any queries, please pop into The Information Office or call 01273 585 493

VOLUNTEERING OPPORTUNITIES IN YOUR AREA!



Could you spare as
little as half an hour
a week to help an
unpaid carer in your
local community?

The Association of Carers is looking for volunteer befrienders, IT whizzes, telephone support helpers, drivers, and more to help unpaid carers in East Sussex.

- No personal care re-quired
- All travel expenses paid
- No experience needed
- Free training given

*"...it's the best thing I've
ever done. I'm so glad I
became a volunteer!"*

 association of
carers
MAKING A DIFFERENCE TO CARERS' LIVES
Registered Charity 1169661

There are ongoing induction & training opportunities in your area
Call 01424 722309 or email info@associationofcarers.org.uk to find out
more

or apply on our website: www.associationofcarers.org.uk



Remembering your Faithful Friend this Christmas

Christmas may be a time to remember family and friends - but Dogs Trust Shoreham is also asking local dog owners to remember their four-legged friends this festive time, with a *Canine Care Card*.

The *Canine Care Card* is a free service, which helps to ensure your dog's future, in the event of you either passing away, receiving a life-changing diagnosis, or moving into a care home. This can often be a great concern to some people, who perhaps do not have a family member or friend in a position to look after their dog, should the worst happen. Therefore, by signing up to the service, Dogs Trust can offer peace of mind, reassuring you that your faithful friend will be well cared for by the charity.

It is easy to sign up to the service, which simply asks for some information on your dog, including their likes and dislikes, as well as your dog's medical history and your vet details. It also asks for you to confirm who you would like as your Dog Guardian. This should be someone you trust, like a friend, family member, solicitor, neighbour, or vet, who can sign over ownership of your dog to Dogs Trust on your behalf, should you become seriously ill or pass away.

You can register online by going to www.dogstrust.org.uk and searching for 'Canine Care Card' - or if you do not have access to the internet, you can request a paper version of the application form. Once the form is submitted, Dogs Trust will then write to you, to confirm when your application has been processed.

Once signed up, should your card ever need to be activated, Dogs Trust will then arrange with your Dog Guardian for your dog to come into the rehoming centre or into foster care. With a team of vets, trainers and behaviourists on hand if needed, your dog will then be welcomed, loved, and well cared for by the charity, who will work tirelessly to find a loving new home for your much-loved canine companion.

If you would like further information about the *Canine Care Card*, or to request a paper application form, please contact Dogs Trust Shoreham's Supporter Relations Officer, Jennifer Cruse, at jennifer.cruse@dogstrust.org.uk or phone 01273 466971.

FREE cycling activities for women

Whether you're a first-time rider or looking to improve your skills, come along to have a chat , gain confidence and get riding.



Information about activities:

- Drop in session, no need to book
- Hire a bike for free
- Learn to ride from a qualified instructor
- Practice cycling skills, in a friendly and safe environment.
- Bikes and helmets are available for use, or you can bring your own.
- Learn about bike maintenance

Details:

Location: Peacehaven Cycle Hub, Big Park

Date: Thursdays

Drop in any time between : 9:30-11:30

For more info, email:

Ania.Woodgate@sustrans.org.uk



Period Bank

**It's a sad reality that
some can't even
afford basic hygiene.**

**But with help,
there is hope.**

Drop off donations

Even a small donation can go a long way.

You can donate period products to ..

**Kempton House Day Centre
Charity Services
Cavell Avenue, Peacehaven,
BN10 7NJ**

**Peacehaven Town Council
Community House
Meridian Centre, Peacehaven,
BN10 8BB**

Pick up points

**Kempton House Day Centre
Charity Services
Cavell Avenue, Peacehaven,
BN10 7NJ**

**Peacehaven Library
Meridian Centre,
Meridian Way
Peacehaven, BN10 8BB**

**Spread
the word**

Share the news with your friends and
inspire them to donate.

Public invited to have their say on local transport

A Public Consultation has been launched asking residents and businesses in East Sussex to help shape the future of local transport.

The development of the fourth Local Transport Plan for East Sussex is currently underway and members of the public have until Friday, December 9 to give their views.

The Local Transport Plan (2023-2050) will be one of the Council's most important documents as it will set out how the authority will connect people to places around and through the county over the next three decades - by walking, cycling, public transport, car or by using new forms of travel.

It will look to improve transport, deliver better access to jobs and services including education, and create safer, healthier, more sustainable and inclusive communities.

At this stage, the Council wants to hear what people's priorities are for travel and transport, the key issues they encounter, and which opportunities for improving travel across the county are important to them.

Cllr Claire Dowling, the Council's lead member for transport and environment, said: "Our next Local Transport Plan will set out a vision for what transport in East Sussex will look like in the next thirty years, and how that vision will be achieved.

"Effective, well-planned transport infrastructure is key to help tackle carbon emissions in the county.

"I encourage residents, businesses and community groups to take part in the consultation to ensure they have their say on how transport in our county will be delivered over the next thirty years."

There are a number of ways people can participate in the six-week consultation.

Residents who would like to take part online can view the consultation via the council's consultation hub www.eastsussex.gov.uk/localtransportplan4consultation or scan the QR code below.

People can also request a copy of the consultation by calling 0345 608 0190 and return their completed survey by freepost. Copies are also available to collect from libraries across East Sussex.

Updates and further opportunities for public engagement on the plan can be found at www.eastsussex.gov.uk/localtransportplan.



Planned Projects To Help People Most In Need Met By Government Silence

A charity that scaled up its operations to support the community through the pandemic crisis is now asking MPs to push the government to pay out the UK Shared Prosperity Fund to enable hundreds of local authorities and not-for-profit organisations to start vital planned projects to help residents through the winter.

The Fund was announced in 2017 as a part-replacement of European Union funding that started to end in May this year, leaving a gap in the resources that many organisations were using to support communities most at risk.

"Our resources were stretched ten times further than we ever expected during the lockdown period," said Paula Woolven, Founder of Havens Community Hub in Newhaven; "And it wasn't a case of 'we can't' but a case of 'we will, somehow', with the support of volunteers and local donors.

"Coming out of the pandemic, we are now hit with a perfect storm of recovery plus the cost of living crisis. We were encouraged by the announcement of the UK Shared Prosperity Fund and delighted to be selected by Lewes District Council as a funded project to create further vital help in a vastly under supported area - Peacehaven and the surrounding towns and villages.

"Sadly, despite the local authorities doing the 'heavy-lifting' of making sure the projects are viable and doing their due-diligence, the Department of Levelling Up, Housing and Communities have failed to meet their timescale of 'rubber stamping' the projects by the start of October and starting to issue the funding from the end of October."

Local authorities have reported a 'deafening silence' to requests for information about when the funding might be released by central government and the longer the funding is delayed, the more costs are being added to the projects due to the unprecedented rise in interest rates and inflation, leaving some asset-based projects in danger of not being financially viable.

"Thankfully, the costs of our project are not rising as quickly as asset-based projects would be," said Paula. "As the community has pledged its support however, it is frustrating knowing we could be helping more people at a time when help is most needed."

For more information, please contact Paula via email: paulawoolven@hotmail.com or mobile: 07710426321



Housebuilder Helps Peacehaven Community School Swap Four Wheels For Two

According to recent figures from Cycling UK, just 2.2% of children cycle to school as opposed to over 35% who are driving in - despite the average journey being just 24 miles. (*)

Barratt Homes, who is building at Chalkers Rise in Peacehaven, has partnered with nearby Peacehaven Community School to encourage children to use more sustainable methods of transport to school, with a donation of 30 hi-vis jackets for the children to use when cycling around the area.

As we move towards the winter months with reduced daylight hours, the donation aims to promote safe long-term cycling to and from school, as well as improving the health and wellbeing of the pupils, encouraging sociability and reducing congestion on the roads and at the school gates.

Kimberley Benson, Sales and Marketing Director for Barratt Southern Counties, commented: *"As a responsible housebuilder, we are committed to making our development and the surrounding area as safe as possible and believe one of the best ways to do this is by switching from four wheels to two. Our donation of hi-vis jackets to Peacehaven Community School will hopefully give the pupils an extra boost of confidence on their trips around the local area."*

Ms Turner, Assistant Headteacher at Peacehaven Community School added: *"Being able to ride in the neighbourhood with bright and visible clothing is imperative, so we are grateful for this thoughtful donation towards road safety. We would like to encourage as many children and their parents to cycle into school as possible, with this having long-term health benefits and also help to reduce carbon emissions i the local area, further benefiting children's health and the environment in which we all live and work in."*



(*) <https://cyclingindustrynews/cycle-to-school-week-campaign-flags-cost-and-co2-savings-to-parents/>

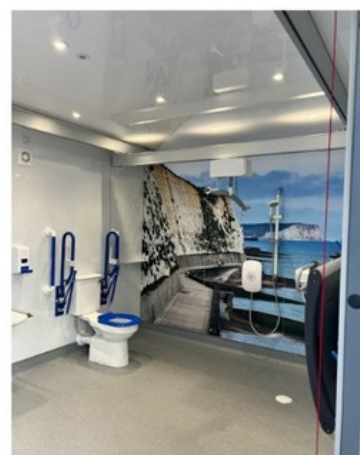
Housebuilder Helps Peacehaven Community School Swap Four Wheels For Two





Changing Places Facility Peacehaven

Opening December 2022



Centenary Park, Piddinghoe Ave,
Peacehaven



Gardening Tips For December

As I write this, the weather has changed and it is definitely not gardening weather! But, we still have to look after it, don't we?

This time of year the leaves start to fall so it's a good idea to rake these from the garden and keep the paths clear.

You can spray roses and fruit trees with a winter tree wash.

If you have acers, birches and vines, you should prune them now to avoid bleeding.

If you feed the birds, please continue in the winter, give them high energy bird feeds and fat products to keep them active in the winter cold.

November / December is the time to plant tulips for spring colour. They are one of the most popular spring flowers.

You can plant fragrant winter shrubs such as Christmas Box, Daphne and Viburnum.

Don't forget to clear the pond of silt and leaves.

Happy Christmas everyone, see you in the New Year.

Volunteering Opportunities with Lewes District Citizens Advice

Our service is made up of a small number of key paid professionals and a much larger group of dedicated volunteers who give up their time freely to help and support others.

Our volunteers make a real difference to vulnerable members of our community:

"Lewes District Citizens Advice helped me through crisis, stabilized my situation and prevented severe repercussions like rent arrears, no food or homelessness."

"Calm, knowledgeable advice helped me to feel less overwhelmed, panicked and unable to feel a way forward. I believe if I hadn't reached out to the welfare rights team, I wouldn't be alive now. This service gave me the support I desperately needed."

We could not deliver our service to the Lewes District community without the dedication and commitment of our professionally trained volunteers.

Are you interested in giving information and advice to members of our community?
Come and join our friendly team!

We offer the option of working remotely by phone and email, as well as face-to-face at our offices in Lewes, Newhaven and Seaford. Volunteers receive comprehensive training with online and in-person group meetings and support at every session.

"Volunteering connects me to the life of the Lewes District community."

"Volunteering with Lewes CA for me means working with a friendly and helpful bunch of people."

We are currently recruiting for the following volunteers:

Administration
Level 2 Advisor
IT Support
Research & Campaigns
Trainer

**If you would like to find out more, we would love to hear from you.
Please email us at recruitment@lewesdistrictca.org.uk**

Multi Agency Surgery

(East Sussex Fire & Rescue, Neighbourhood First,
and Homes First)

at

**Newhaven Community
Fire Station, Saxon House**

9.30am to 12.00 midday

on

December 14th & 11th January

Need help? We can offer advice and help with:

- Access to Lewes District Council website
- Housing
- Food
- Home Safety information
- Energy

**No need to book, just pop in and
meet the team and we will give
advice where we can.**

STRONGER together



Sussex Safer Roads

PARTNERSHIP

Be Bright, Be Seen – FREE High-Vis Road Safety items available at Peacehaven Town Council, thanks to The Sussex Safer Roads Partnership.

Limited Stock, so Don't Miss Out – Items Available on a First Come, First Served Basis.

The main priority of Sussex Safer Roads Partnership (SSRP) is the safety of road users. Whilst they do everything they can to look after those who take to the highways and byways of Sussex and beyond, there are things that we, as road users, can do to improve our protection.

For example, if you are a cyclist, pedestrian, or horse-rider, there are a number of ways you can make yourself Be Bright and Be Seen during the darker, winter months.

The SSRP recommend the following:

- High visibility vests , backpacks and jackets – Because you use different parts of your eyes at different levels of light, it is best to have fluorescent and reflective items to wear. Fluorescent works in the daytime with the UV, and reflective at night.
- Lights on bikes – It is not only the law to use lights on your push bike (as stated in The Highway Code), but it also helps greatly with visibility. The Highway Code also allows for flashing lights now, which can help even more.
- Reflective Snapbands – This can be moved to different parts of the body, and are most useful on limbs that will be active (around ankles on cyclists or horse, wrists for cyclists who use arms to indicate).
- Rucksack covers – Even if you wear a high-visibility vest, this will get covered if you put a rucksack over it. A fluorescent and reflective cover will help here.

The SSRP says that ***"it is much better to be lit up like a Christmas tree than not at all, so do not panic that you may have too much on."***

If you'd like to receive a **FREE**, High-Vis road safety kit item, please pop into The Information Office at Community House, Meridian Centre, Peacehaven, BN10 8BB.

Limited Stock – Items will be given out on a first come, first served basis.
Follow The Sussex Safer Roads Partnership via:



Facebook SaferRoads

Twitter @SussexSRP

Instagram SussexSaferRoadsPartnership

#community #peacehaventowncouncil #peacehaven #bebrightbeseen #sussexsaferroads



**Wishing a safe and Merry
Christmas to all who live, work
and visit Peacehaven from the
Councillors and Officers at
Peacehaven Town Council.**

**Our Christmas opening times
during the festive period will be:
23/12/22 – Open 9 a.m.-4 p.m.
24/12/22 to 03/-1/23 – Closed
3 January 2023 – Office re-opens**

**We wish you all a prosperous and
happy 2023**

Community



PEACEHAVEN TOWN COUNCIL

CONTACT INFORMATION

NORTH WARD

CLLR. EMILIA SIMMONS

01273 581676

CLLR.EMILIASIMMONS@PEACEHAVENTOWNCOUNCIL.GOV.UK

CLLR. DAWN PAUL

07966842232

CLLR.DAWNPAUL@PEACEHAVENTOWNCOUNCIL.GOV.UK

CLLR. SUE GRIFFITHS

07932448721

CLLR.SUEGRIFFITHS@PEACEHAVENTOWNCOUNCIL.GOV.UK

CLLR. WENDY VECK

CLLR.EMILIASIMMONS@PEACEHAVENTOWNCOUNCIL.GOV.UK

CLLR. LUCY JO SYMONDS

CLLR.LUCYJOSYMONDS@PEACEHAVENTOWNCOUNCIL.GOV.UK

EAST WARD

CLLR. CLAUDE CHETA

07869069332

CLLR.CLAUDECHETA@PEACEHAVENTOWNCOUNCIL.GOV.UK

CLLR. LYNDA DUHIGG

01273 586 163

CLLR.LYNDADUHIGG@PEACEHAVENTOWNCOUNCIL.GOV.UK

CLLR. CHRISTOPHER COLLIER

07946446033

CLLR.CHRISCOLLIER@PEACEHAVENTOWNCOUNCIL.GOV.UK

CLLR. CATHERINE GALLAGHER

07810560337

CLLR.CATHYGALLAGHER@PEACEHAVENTOWNCOUNCIL.GOV.UK

CLLR. ISOBEL SHARKEY

CLLR.ISOBELSHARKEY@PEACEHAVENTOWNCOUNCIL.GOV.UK

WEST WARD

CLLR. ALAN GOBLE

01273 589 979

CLLR.ALANGOBLE@PEACEHAVENTOWNCOUNCIL.GOV.UK

CLLR. JOB HARRIS

01273 585 050

CLLR.JOBHARRIS@PEACEHAVENTOWNCOUNCIL.GOV.UK

CLLR. KATIE SANDERSON

CLLR.KATIESANDERSON@PEACEHAVENTOWNCOUNCIL.GOV.UK

CLLR. GLORIA HILL

01273 579 305

CLLR.GLORIAHILL@PEACEHAVENTOWNCOUNCIL.GOV.UK

CLLR. DAVID SEABROOK

07973864340

CLLR.DAVIDSEABROOK@PEACEHAVENTOWNCOUNCIL.GOV.UK

CLLR. RON WHITE

CLLR.RONWHITE@PEACEHAVENTOWNCOUNCIL.GOV.UK

CENTRAL WARD

CLLR. ALAN MILLINER

CLLR.ALANMILLINER@PEACEHAVENTOWNCOUNCIL.GOV.UK

PEACEHAVEN TOWN COUNCIL OFFICES



TELEPHONE: 01273 585 493

INFO@PEACEHAVENTOWNCOUNCIL.GOV.UK



PEACEHAVENTOWNCOUNCIL



@PEACEHAVENTOWN



@PEACEHAVENTOWN

WWW.PEACEHAVENTOWNCOUNCIL.GOV.UK



E-NEWS

Your Town, Your Community, Your News

**Festive Best Wishes to
All Our Residents, Readers
and Community**

**From All at
Peacehaven Town
Council**