

# Peacehaven Town Council

## Annual Report 2018/19



*Community House, Meridian Centre, Greenwich Way*

*Peacehaven, East Sussex, BN10 8BB*

*Tel: 01273 585493*

*Email: [Info@peacehaventowncouncil.gov.uk](mailto:Info@peacehaventowncouncil.gov.uk)*

*Website: [www.peacehaventowncouncil.gov.uk](http://www.peacehaventowncouncil.gov.uk)*

*Facebook: [www.facebook.com/Peacehaven-Town-Council-236861203082964/](https://www.facebook.com/Peacehaven-Town-Council-236861203082964/)*

*Twitter: <https://twitter.com/ptcinformation>*

# The Role Of Peacehaven Town Council

Peacehaven Town Council represents its residents in a number of different ways

Councillors have been really active around the town this year, ensuring that residents are listened to, that action is taken to improve the facilities and to make sure people enjoy living and working in Peacehaven

Earlier this year Council reinstated periodic surgeries, with Chairs of Committees, the District Policing teams and the MP, meeting with residents to hear their concerns. Most of the comments were about the Meridian Centre and its surrounding area

Councillors have been appointed to serve on the following Associations:-

Age UK  
Peacehaven Telscombe Housing Association  
Royal British Legion  
Lewes Association of Local Councils  
Beekeeping Group  
CTLA  
Peacehaven Residents Association  
Peacehaven and Telscombe Football Club  
Chamber of Commerce  
Neighbourhood Plan

Crime Stoppers  
House Project  
Town Forum  
Friends of Downlands Court  
Citizens Advice Bureau  
The Big Park  
Wave Leisure  
Mature Citizens Forum Peacehaven  
Centenary Cycle Hub  
Business Planning

Maps of Peacehaven wards are available on the Peacehaven Town Council Website [www.peacehaventowncouncil.gov.uk/ward-maps](http://www.peacehaventowncouncil.gov.uk/ward-maps) as are further details on your Councillors

Peacehaven Town Council produces a monthly e-news magazine. This is an effective way of keeping in touch with our community.

Details can be found on our website on how to subscribe and how to place an advertisement:  
<http://www.peacehaventowncouncil.gov.uk/e-news-magazine/>





# Councillors

Peacehaven Town Council has 17 Members covering East, North and West Wards. They represent in excess of 17,000 residents and will sit on Peacehaven Town Council until the next election in May 2019. The primary role of a Councillor is to represent the ward and the residents who live in it. Councillors have a central part to play in making decisions that impact on their ward and across the whole Council

Becoming a Councillor can be a rewarding form of public service that puts people in a position where they can make a difference to the quality of someone's life. However, being a Councillor is also a lot of hard work. Every day Councillors have to balance the needs and interests of their residents, voters, the Council and their personal lives

The Councillor's role takes in:

- ward representation
- decision making
- policy and strategy review and development
- overview and scrutiny
- regulatory duties
- community leadership and networking

## East Ward

## West Ward

## North Ward



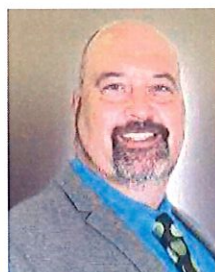
Cllr. Cheta



Cllr. Neave



Cllr. Robertson



Cllr. Botting



Cllr. Coles



Cllr. Harrison



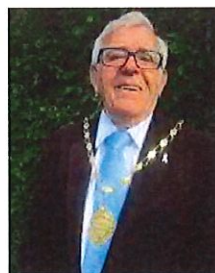
Cllr. Harrison-Hicks



Cllr. Smith



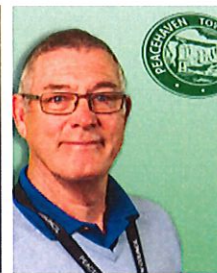
Cllr. Brindley



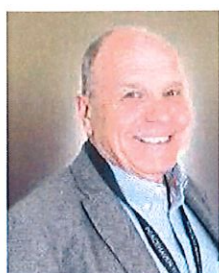
Cllr. Harris



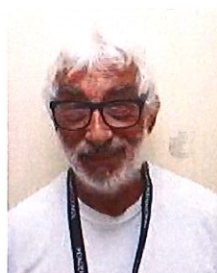
Cllr. Loraine



Cllr. Simmons



Cllr. Maskell



Cllr. Milliner



Cllr. Duhigg



Cllr. Griffiths



Cllr. Buchanan

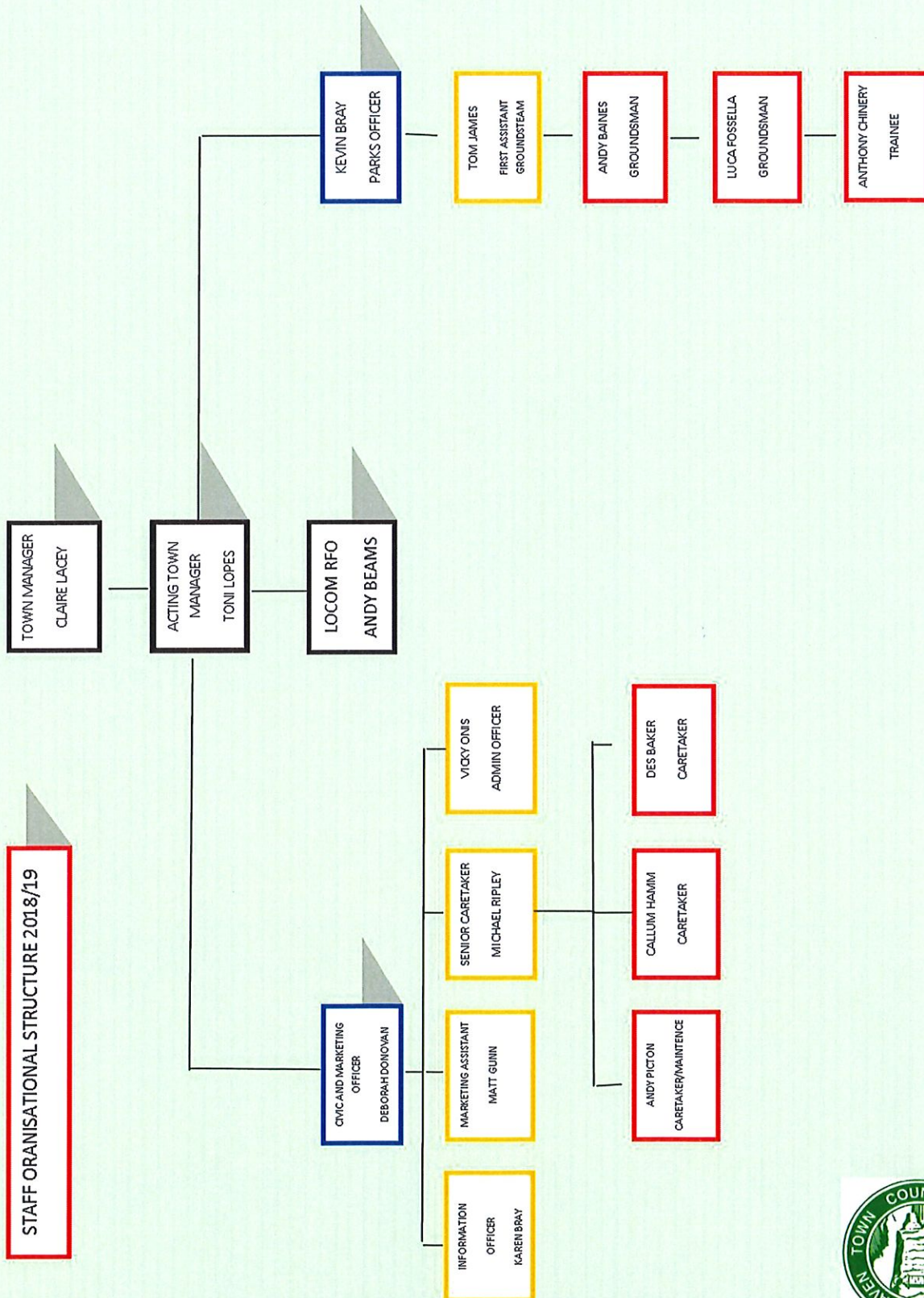
# Power & Duties

Function	Powers & Duties	Statutory Provisions
Allotments	Duty to provide allotments. Power to improve and adapt land for allotments, and to let grazing rights	Small Holding & Allotments Act 1908, ss. 23, 26, and 42
Bus shelters	Power to provide and maintain shelters	Local Government (Miscellaneous Provision) Act 1953, s. 4
Clocks	Power to provide public clocks	Parish Councils Act 1957, s.2
Community centres	Power to provide and equip buildings for use of clubs having athletic, social or recreational objectives	Local Government (Miscellaneous Provisions) Act 1976 s.19
Conduct	Duty to promote and maintain high standards of conduct	Localism Act 2011, s.27
Crime Prevention	Duty on Parish Councils to consider crime reduction in every policy and action	s17 Crime and Disorder Act 1998 (as amended)
Dogs	Power to make a Dog Control Order. Power to take enforcement action against those who commit an offence against a Dog Control Order	Cleaner Neighbourhoods and Environment Act 2005
Entertainment and the arts	Provision of entertainment and support of the arts	Local Government Act 1972, s.145
General Power of Competence	Power to do anything that an individual may do (eligible Councils only)	Localism Act 2011, s.1
Land	Power to acquire by agreement, to appropriate, to dispose of. Power to accept gifts of land	Local Government Act 1972, ss.124, 126, 127 Local Government Act 1972, s.139
Litter	Provision of receptacles. Power to take enforcement action against those that litter	Litter Act 1983, ss.5,6 Cleaner Neighbourhoods and Environment Act 2005
Neighbourhood Planning	Power to create a Neighbourhood Plan and other development mechanisms	Localism Act, s.116
Open spaces	Power to acquire land and maintain	Public Health Act 1875, s.164 Open Spaces Act 1906, ss.9 and 10
Public buildings and village hall	Power to provide buildings for public meetings and assemblies	Local Government Act 1972, s.133
Public conveniences	Power to provide	Public Health Act 1936, s.87
Sustainable communities	Able to be represented on a panel of representatives to be consulted on proposals that would contribute to sustainable communities	Sustainable Communities Act 2007
war memorials	Power to maintain, repair, protect and alter war memorials	War Memorials (Local Authorities' Powers) Act 1923, s.1; as extended by Local Government Act 1948, s.133

Local Councils have a wide range of powers and duties. The above table sets out the main ones



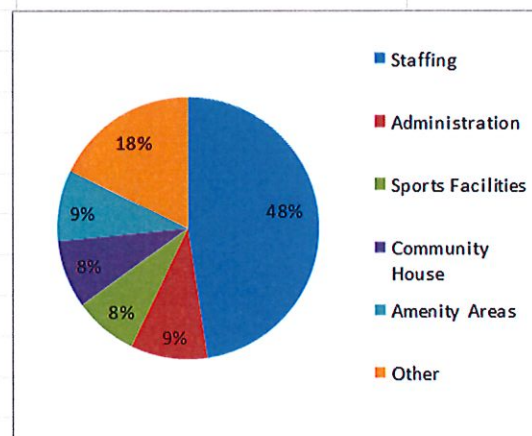
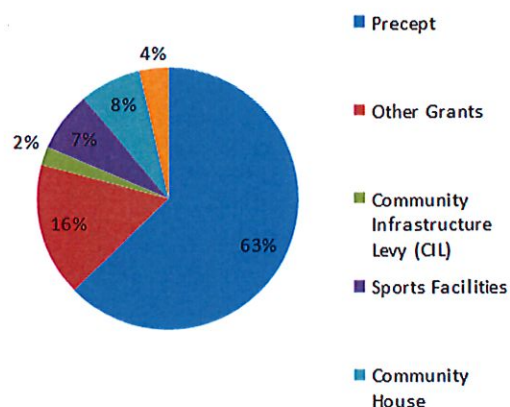
# Staff Structure



# Policy & Finance

## Summary of Peacehaven Town Council's account for the year ended 31 March 2019 (as at end January 2019)

INCOME	£	EXPENDITURE	£
Precept	428,340	Staffing	338,421
Other Grants	112,184	Administration	67,537
Community Infrastructure Levy (CIL)	15,358	Sports Facilities	56,457
Sports Facilities	50,838	Community House	59,699
Community House	51,451	Amenity Areas	61,994
Other	24,225	Other	126,669
<b>TOTAL</b>	<b>682,396</b>	<b>TOTAL</b>	<b>710,777</b>



Cllr. Robert Robertson (Chair of the Committee) will be available at the Annual Town Meeting to answer any pre-registered questions you have regarding any Policy & Finance issues.



# Planning & Highways

Cllr. Melvyn Simmons (Chairman) Cllr Lynda Duhigg (Vice Chairman) Cllr. Daryll Brindley, Cllr Sue Griffiths, Cllr Alan Milliner, Cllr Claude Cheta, Cllr Jackie Harrison-Hicks and Cllr Job Harris.

We encourage residents to attend the committee meetings to voice their opinions at public question time at the beginning of each meeting on planning applications. Resident's views are very important to the future of Peacehaven.

Planning Applications received from Lewes District Council are carefully considered incorporating local resident's views with respect for Peacehaven but the committee is only advisory on applications received before being submitted back to Lewes District Council for consideration as to whether the planning applications are for refusal or approval.

In the past year we have had problems receiving enough information on planning applications for us to make informed decisions, this have now been rectified and it is useful to read environmental assessments along with other considerations. Lewes District Council have started to create more policies relating to new builds that look to the future such as cycle storage and charging points for electric cars but there are many more policies that could be considered to future proof new buildings.

Peacehaven has been changing dramatically over the years, welcoming new friends and residents to enjoy living and working in a beautiful Sussex coastal town.

New housing developments and redevelopment of existing properties is changing the landscape for the future needs of residents.

The A259 coast road improvement through Peacehaven is well over due.

Some original development properties sited on large pieces of land once sold and planning permission granted are being redeveloped into flats, 2-3 bedroom properties and retirement apartments.

The site where once stood Peacehaven Police Station has seen redevelopment. The company Churchill has built retirement apartment's at the corner of A259 and Sutton Avenue.

The Lower Hoddern Farm Planning Application was approved by Lewes District Council although Peacehaven Town Council Planning and Highways committee and numerous residents after surveys and a public meeting recommended refusal due to lack of infrastructure, Schools and Doctors.

The building of Chalkers Rise ( Lower Hoddern Farm) development is under way and the extra traffic on Pelham Rise and local areas are causing problems to local residents with each complaint being addressed as situations arise.

Homes are important for everyone but without improved infrastructure in the locality for shopping, dining experience and other services Peacehaven at the present will not meet the growing needs of residents.

Peacehaven Town Council Planning and Highways Committee will continue to work for the best interest of Peacehaven.



## Leisure & Amenities

The Council own, manage and maintain several children's play areas, recreational parks and sports facilities across the town. Centenary Park, Piddinghoe Avenue, opened in March 2015 as an exciting new destination park, delivered in partnership with the Big Parks Project and has on-site provision of a café, bespoke playgrounds, skatepark, sport facilities, cycle and walking paths, making this a unique park attracting visitors from around the area and is a gateway into the South Downs National Park. The existing sports facilities were modernised to create a multi-use games area with floodlighting for tennis, netball and football, along with several other football pitches available. All of our sports facilities and recreational parks are available to hire. Please contact us for details.

Cllr. Dave Neave (Chair of the Committee) will be available at the Annual Town Meeting to answer any pre-registered questions you have regarding any Leisure & Amenities issues.





# Food Bank

Aside from accepting donations such as baked beans and soup, what else is there to know about the organisations that provide emergency relief to people in crisis?

## **Food banks provide more than just food:**

Many food banks are able to provide essentials such as toiletries, sanitary products, nappies and pet food. Although they are always grateful to accept food items, why not think outside the box and donate some toothpaste, deodorant and shower gel? They can go a long way in helping somebody to feel better about themselves when they are experiencing a crisis.

## **Poverty affects your health**

Mental and physical health is closely associated with poverty, with more than a quarter of adults in the poorest fifth of the population experiencing depression and anxiety. The stress of coping with the effects of poverty can certainly be detrimental to health. In reverse, those with poor physical or mental health are more likely to be affected by low income or income loss, therefore increasing the likelihood that they will need to depend on a food bank.

## **Food banks offer important signposting services**

Whilst food banks do provide a three day emergency food parcel, many food banks also provide vital signposting services for people facing poverty. For example, volunteers can give out information on finding emergency finance advice, welfare support, and community groups, suggestions for other charities and support services and budget cookery courses. Sadly, social isolation often goes hand in hand with food poverty, and a warm welcome and non-judgmental conversation with a food bank volunteer can go a long way for somebody who is facing a crisis.

## **Food bank use is the last resort for most people**

As if the decision to visit a food bank wasn't traumatic enough, people often experience a huge amount of stigma when they are facing a financial crisis. A Child Poverty Action Group report shows that people accepting help from a food bank felt that it was 'shameful' and 'embarrassing,' and that they had been driven to the food bank after exhausting all other possible avenues of support.

## **It's really easy to support your local food bank.**

Whether you choose to volunteer, donate money, food or toiletry items, supporting your local food bank is simple. If you're unsure what to donate, it's best to check with your local food bank to see what they need. Don't be shy, get in touch and see how you can help!

Supporting food banks is therefore a straightforward way to positively impact your local community and help the most vulnerable people in society. You could make a real difference by donating some food items or volunteering. Who knows, you might even change somebody's life.

**Please visit the Info & Advice Hub at 31a High Street, Newhaven who are open during the following hours:**

Monday 9am – 12pm	Wednesday 9am – 12pm	Friday 10am – 12pm
Tuesday- Closed	Thursday 9am – 12pm	Saturday & Sunday -Closed



# Peacehaven Youth Mayor

In this last year being nominated Youth Mayor has created a starting process with the youth, allowing for a constructive and open voice in the community.

It has also been a year of ground laying between the council and the young people as a joint effort to support improving our town through a relationship of mutual respect and positive collaboration. This is shown through various initiatives such as the gala dinner where we aimed to create a dialogue that was continued.

Across the year we pursued the dialogue with several key stake holders including, the High sheriff, The Chamber of Commerce, Lewes District councillors, and the Duke and Duchess of Sussex. Thus, as a personal achievement it taught me the political attributes that make a well-formed leader as well as opportunities that have affected my view on the government and our position in society i.e. elected Deputy Youth Parliament Representative for Eastbourne and Coastal Constituency. In addition, this exciting experience had a transformative dissect on my growth and development as a future leader and preparedness to serve my town and society.

Honourable councillors if I have one message to convey, it is that the youth is the future and their meaningful involvement in the decision-making process is key to support the council in the creation of a healthy town. For all these reasons I count on you to keep the platform of the Youth Mayor continued and the intergenerational dialogue alive.





# The Mayor Of Peacehaven

First of all I would like to thank residents who have supported my chosen fundraising project. I am pleased to report that I raised enough money to fund a portable ECG machine, for home visits, for the Meridian Anchor Surgery and Rowe Avenue Surgery. A cheque to each surgery will be presented during my Civic Reception on Saturday 16th March.

I must be honest and report that it's been a most unusual year for me; I hadn't expected to be elected as Mayor for the Town but I hope that I have supported and served the town to my best ability. I have enjoyed the role and must commend my Deputy Mayor, Cllr. Job Harris, when he has covered some engagements on my behalf, when I've not been able to attend due to prior engagements.

Peacehaven is rapidly changing with shop closures and various new housing in progress. Our town still remains a wonderful place to live; your ward councillors are available to help with any questions you have which relate to the town. You'll find their contact details within this annual report or via our monthly e-news magazine which you can subscribe to via the PTC website.



In June 2018 I hosted a fashion show in the main hall of community house which proved to be a successful evening. The town's community summer fair is always well attended bringing at least



4,000 visitors from Peacehaven and other areas to enjoy the stalls, fun fair & a car boot sale. It's great to see such a great community spirit.

Not really knowing what to expect when attending two wrestling events in my term I was surprised that the shows proved to be very entertaining. I am so glad I was unable to get into the ring!

Peacehaven was delighted when the Duke & Duchess of Sussex made a quick visit in October 2018; I was extremely privileged to be presented. Fatma Bacha our Youth Mayor and Harvey Browning, Deputy Youth Mayor were also involved in the day's proceedings.

Our councillor's agreed to buy a six foot 'Tommy' to support the 'There but not There' campaign in collaboration with the Royal British Legion. The statue has been fixed permanently to our war memorial at Meridian Park.

During the Christmas period I was fortunate to be invited to many functions. One which stands out in



particular is the production of Grease performed by the drama students at Peacehaven Secondary School. Their acting ability was tremendous.

The Town's Christmas market attracted many more visitors than last year. The council was given permission to have stalls in the Meridian Centre and PTC used all rooms in Community House to make the event bigger. Father Christmas had many young children queue to see him, the waiting area was organised by NSPCC representative Dawn Paul.

I would like to thank the Officers at Peacehaven Town Council for their support throughout the year, to my fellow councillors and to all local residents. I hope you will continue to support the varied events Peacehaven Town Council has to offer.

