

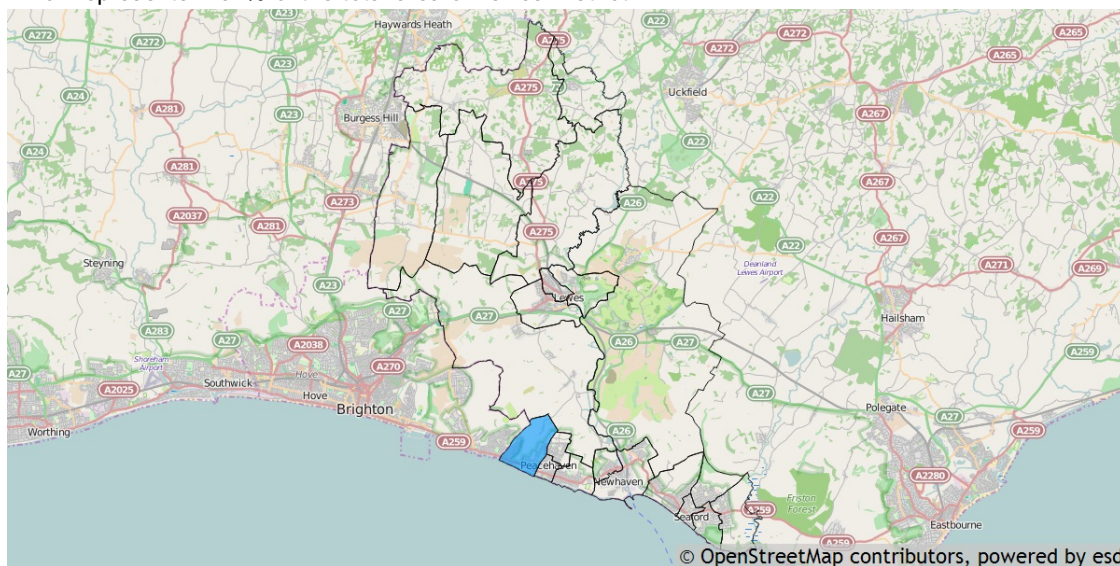
Basic facts about East Saltdean and Telscombe Cliffs Ward

This report provides a summary of the latest available information on the demographic and socio-economic make-up of the East Saltdean and Telscombe Cliffs Ward within Lewes. It looks at the population structure and provides information on the economic, housing and educational achievement of the Ward.

This report is part of a series of reports available from the Local Government Association's LG Inform Plus service. Other free reports include a demographic and economic profile of Lewes and a health and wellbeing profile which enables a side by side comparison of all Wards in Lewes.

If you want to be able to create your own tables, charts and maps for Wards and other areas within your authority's boundaries, or build a custom small area report using the full set of national and local data stored in our database, why not subscribe to LG Inform Plus and access these and many other useful tools. To find out more about our service please telephone 020 7664 3195, email: esd-toolkit@local.gov.uk or take a look at <http://about.esd.org.uk/subscription-benefits>.

East Saltdean and Telscombe Cliffs is one of the 21 Wards of Lewes. It has an area of 473 hectares which represents 1.62% of the total area of Lewes District.



Residents

East Saltdean and Telscombe Cliffs has a resident population of 7,477 which represents 7.67% of the total Lewes resident population of 97,502.

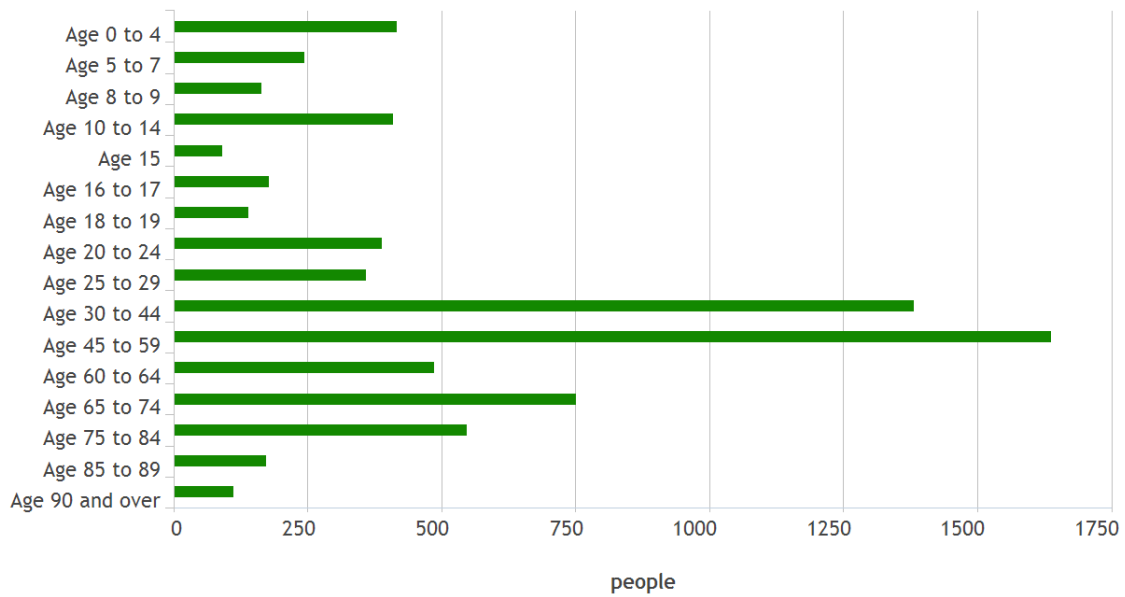
East Saltdean and Telscombe Cliffs's resident population is 51.5% female and 48.5% male.

Age

The mean age of the East Saltdean and Telscombe Cliffs Ward population is 43 years compared to a mean age of 44 years for residents in the whole of Lewes. The predominant age band in East Saltdean and Telscombe Cliffs Ward is Age 45 to 59 which represents 21.90% of the population.

Age structure

source: Census 2011



East Saltdean and Telscombe Cliffs, 2011

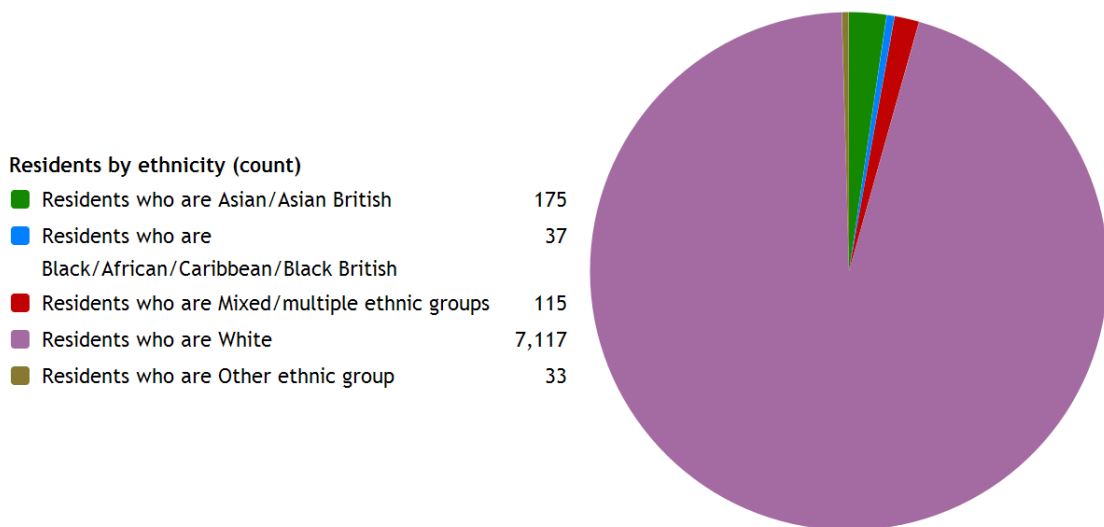
Powered by esd

Ethnicity

The largest ethnic group is 'Number of usual residents who are White' with 95.1% of the Ward's population. That compares with a figure of 96.6% for the District as a whole, 96.0% for the East Sussex County and 90.7% for all of South East.

The second largest ethnic group is 'Number of usual residents who are Asian/Asian British' with 2.3% of the Ward's population. That compares with 1.4% for the District as a whole, 5.2% for the East Sussex County and 7.8% for all of South East.

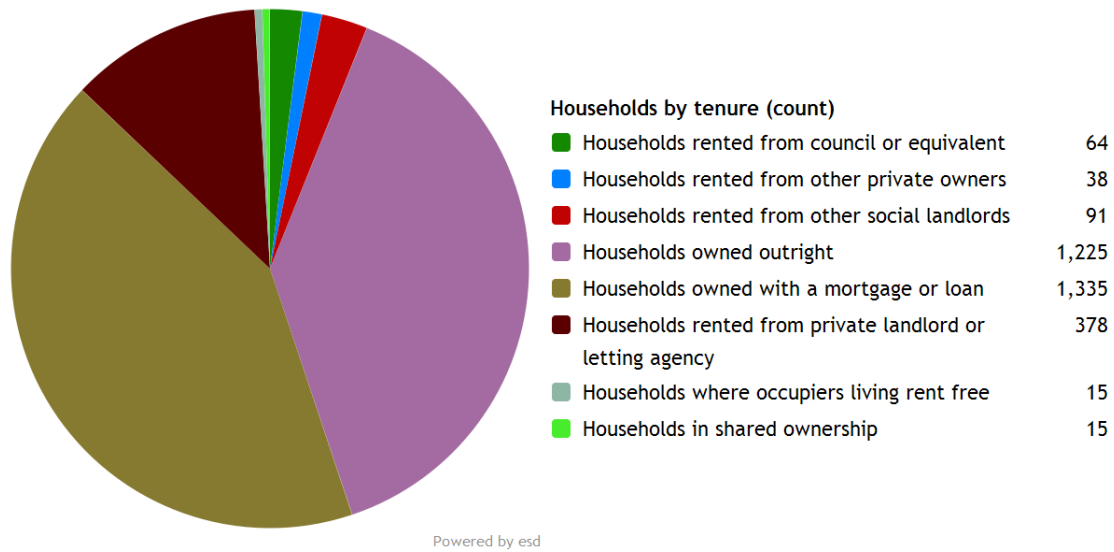
The ethnic split of East Saltdean and Telscombe Cliffs 's residents is shown below.



Powered by esd

Households

East Saltdean and Telscombe Cliffs Ward has 3,161 households, which represents 7.49% of Lewes's 42,181 households. The household split by tenure is shown below.



The largest number of households lives in 'Number of all households - Owned with a mortgage or loan' accommodation with 42.2% of the Ward's households. That compares with 32.8% for the District as a whole, 31.3% for East Sussex County and 33.5% for the whole of South East.

The second largest number of households lives in 'Percentage of all households - Owned with a mortgage or loan' accommodation with 38.8% of the Ward's households. That compares with 39.8% for the District as a whole, 37.9% for East Sussex County and 31.0% for the whole of South East.

The Ward has 323 households with dependent children aged 0 to 4. That represents 10.20% of the Ward's households.

872 households in the Ward have 'Dependent children in household: All ages'. That represents 27.60% of the Ward's households.

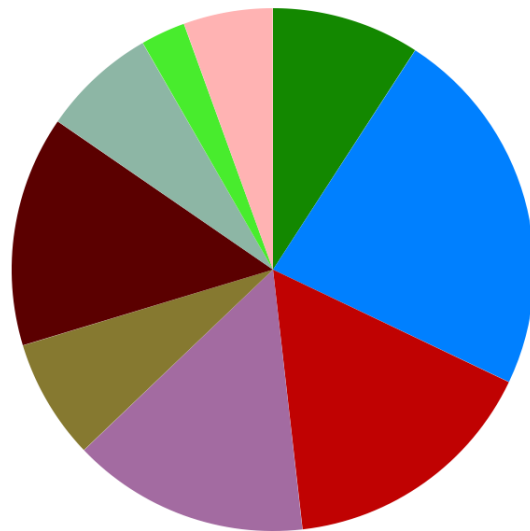
Employment

The following chart provides a breakdown of the East Saltdean and Telscombe Cliffs Ward by socio-economic classification for all residents aged 16 – 74.

The National Statistics Socio-economic Classification (NS-SEC) provides an indication of socio-economic position based on occupation. It is an Office for National Statistics standard classification. To assign a person aged 16 to 74 to an NS-SEC category their occupation title is combined with information about their employment status, whether they are employed or self-employed, and whether or not they supervise other employees. Full-time students are recorded in the 'full-time students' category regardless of whether they are economically active or not.

Residents by NS-Sec (count)

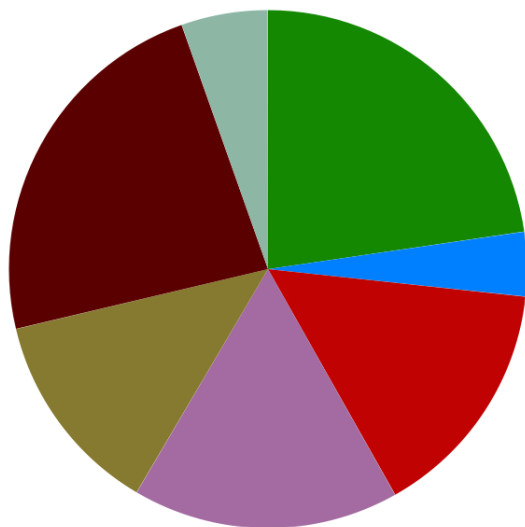
NS-Sec: Higher managerial, administrative and professional	488
NS-Sec: Lower managerial, administrative and professional	1,220
NS-Sec: Intermediate	858
NS-Sec: Small employers and own account workers	782
NS-Sec: Lower supervisory and technical	396
NS-Sec: Semi-routine occupations	760
NS-Sec: Routine occupations	378
NS-Sec: Never worked and long-term unemployed	148
NS-Sec: Not classified	294



Powered by esd

The largest group is 'National Statistics Socio-Economic Classification - 2. Lower managerial, administrative and professional occupations' representing 22.90% of the Ward's population.

Education



Residents by educational qualifications (count)

No qualifications	1,397
Apprenticeship	247
Level 1 qualifications	931
Level 2 qualifications	1,024
Level 3 qualifications	789
Level 4 qualifications and above	1,435
Other qualifications	332

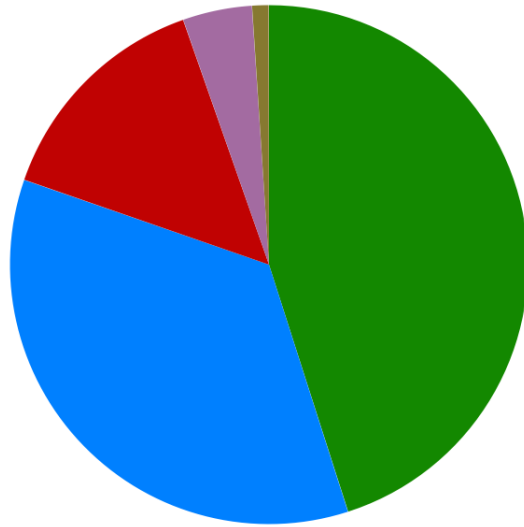
Powered by esd

23.30% of East Saltdean and Telscombe Cliffs 's residents have achieved level 4 qualifications and above compared to 29.90% in South East as a whole and 22.70% of East Saltdean and Telscombe Cliffs 's residents have no qualifications compared to 19.10% in South East .

Health

Residents by level of health (count)

Very good health	3,370
Good health	2,635
Fair health	1,071
Bad health	323
Very bad health	78



Powered by esd

East Saltdean and Telscombe Cliffs has 323 (4.3%) residents that report being in bad health and 78 (1.0%) residents that report being in very bad health.

Its ranking for the number of residents in very bad health is 6 (out of 21 Wards) within Lewes.

Further information

This report provides a selection of information about your authority. To get more information and create charts, tables and maps for your own reports, you could consider subscribing to LG Inform Plus. See <http://about.esd.org.uk/subscription-benefits> or contact the LG Inform Plus team at esd-toolkit@local.gov.uk with any queries. Subscriptions go towards supporting the sustainability of the local government information standards and LG Inform Plus tools for the benefit of the whole sector.